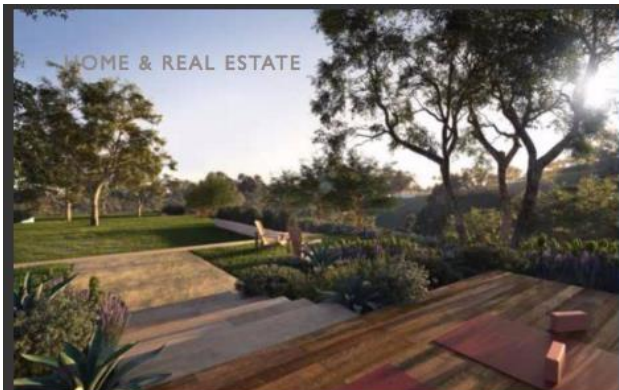




VICTORIA BECKHAM COLLECTION

The limited-edition collection reflects the charming, yet functional essence of the Victoria, Victoria Beckham womenswear now at Target



MALIBU LIVING. SPANISH STYLE. CAVALLERI.

Tours commence as renovation continues on former Villa Malibu rental property





Pacific Eagle Holdings, a San Francisco-based real estate manager known for world-class properties in premier U.S. gateway markets, announces its latest luxury residential offering, Cavalleri. Transformation of this prime Malibu rental property, formerly known as Villa Malibu, commenced last summer and after renovations complete this summer, Cavalleri will emerge as a luxurious condominium. Located on a 10-acre gated reserve just a short ride from Zuma Beach, Cavalleri will comprise 68 residences that will exude Spanish Revival charm while meeting the needs of modern-day life by balancing functionality with stylish interiors.

"From the peerless amenities to the serene milieu, we expect living at Cavalleri will appeal to those looking to adopt a resort inspired lifestyle," said Hans Galland, Senior Vice President of Development for Pacific Eagle. "There are limited condominium homes for sale in the area, and this project will provide home buying opportunities for those wanting to immerse themselves in the magic of Malibu."

Award-winning architects Edmonds + Lee will seamlessly blend architectural innovation and contemporary sensibility with a distinctly modern coastal Southern California flair. With prominence placed on eco-friendly design and sustainability, residences will include craft finishes, hardwood flooring, spa-quality bathrooms, gourmet kitchens, and open, airy floor plans. Two- and three-bedroom residences will range in size from 1,577 square feet to over 2,200 square feet, starting at \$1.23M.

Outside, internationally recognized landscape architect Pamela Burton will reimagine the vast

"We expect living at Cavalleri will appeal to those looking to adopt a resort inspired lifestyle"

splendor of Cavalleri's grounds and rolling hills with the incorporation of native species while paying homage to the site's history, ecology, and geography. Cavalleri will also boast a 52-foot swimming pool, state-of-the-art fitness center, outdoor dining pavilion, yoga terrace, two tennis courts, bocce ball court, and a meditation area.

"Pacific Eagle is a forward-thinking, nimble real estate company focused on properties that provide superior amenities and an experience that's authentic to the local community," Galland said. "Cavalleri

will be a haven for residents, embracing Malibu's surrounding beauty, while remaining proximate to Southern California's bustling nightlife, word-class dining and distinctive cultural experiences."

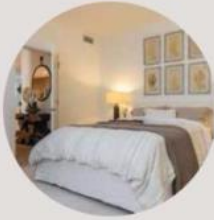
The picturesque location will allow residents to easily enjoy the quintessential Malibu lifestyle – surfing, hiking, biking and more. But it is not only for lovers of the great outdoors, Malibu is within a top tier school district and just a short drive to premier shopping and dining destinations including the Malibu Country Mart, Lumber Yard, Santa Monica Promenade and Rodeo Drive.

"The residences are open and airy with seamless flow between the indoors and expansive outdoor terraces. Where else in Southern California can you be this close to world-famous beaches on a 10-acre reserve for under \$2 million?" added John Pallante, Director for The Mark Company, the exclusive sales and marketing partner for Cavalleri. "The unique rural charm of Point Dume is just 45 minutes to Beverly Hills. The confluence of rustic charm, Malibu glamour and outdoor pursuits with access to a global city is unprecedented." ■

Learn more at www.cavallerimalibu.com or on Facebook, Twitter and Instagram.



Model Unit



Designed in partnership with Restoration Hardware, the new model exemplifies coastal laid-back luxury. With prominence placed on eco-friendly design and sustainability, the model residence includes craft finishes, hardwood flooring, a spa-quality bathroom, gourmet kitchen, and an open, airy floor plan.